



MS 20

It is a special plaster produced for the improvement of humid and damaged walls. The walls absorb existing water which is loaded various salts like carbonate, sulfate, nitrate from the soil in different seasons via capillary canals and spaces. Then the water absorbed from the soil evaporates and the moisture trace of water and the salts absorbed from the soil remain back. These salts accumulate in the wall and the plaster over time, and when they come back in contact with moisture, they come forth from the wall by popping up the paint and even the plaster. In order to solve this problem, **ISONEM MS 20** made of capillary plaster and water is allowed to evaporate rapidly without any trace of moisture. **ISONEM MS 20** contains micro-spaces that store salts and prevent their expansion. It is prevented that the salts damage to the paint and the plaster thanks to these spaces. It prevents swelling due to efflorescence. **ISONEM MS 20** is hydrophobic (water repellent). It provides thermal insulation thanks to micro cavities up to 40%.

USAGE AREAS

- In humid walls such as bathroom, kitchen, basement,
- On the walls in contact with soil,
- Subbasements and all kinds of paint blistering.

APPLICATION INFORMATION

Surface preparation : The surface must be cleaned from old salt-damaged plaster and the cracks and gaps should be filled with **ISONEM M03** elastic mortar.

Application Method : The salt-damaged plaster layer is completely scraped off by mechanical methods. 4 L water is transferred to a suitable container. It is mixed for 5 minutes until homogenous with a mixer. The application is made in two layers. The first layer is drawn to the surface with a 5 mm thick trowel. The second layer is glued and polished by pulling 2 cm thickness after 24 hours. Paint should be made after 14 days. Breath-taking paints should be preferred when selecting the paint type.

TECHNICAL SPECIFICATIONS

- **Water retention rate (%)** : 98
- **Capillary water absorption rate (kg/m³)** : 0,35
- **Micro-space ratio (%)** : 34
- **Water penetration depth (mm)** : 2
- **Compressive strength (Mpa)** : ≥ 10 , CLASS R1
- **Chloride ion content (%)** : $\leq 0,05$
- **Adhesive bond (Mpa)** : $\geq 0,8$
- **Solvent** : Water
- **Color** : Grey
- **Product consumption** : 20 kg/m² (For 2.5 cm thick plaster)
- **Paintable (Coverage) Area** : min. 1 m²/ craft bag

PACKAGING & STORAGE

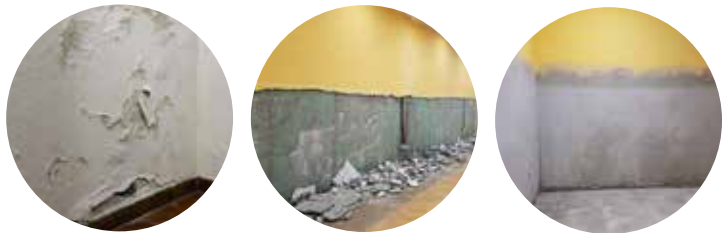
- **Packaging** : 20 kg Craft bag
- **Storage temperature (°C)** : 5 - 35 °C
- **Shelf life** : 24 months from date of production if stored in original, unopened, undamaged packages.
- **Storage condition** : Store tightly closed in a dry and cool place.

! IMPORTANT


The surface should be protected from rain, water, mechanical loads and impacts for 24 hours during and after the application.

! APPLICATION CONDITIONS and RISKS


Things to consider during and after the application	The application surface must be clean and free from all impurities like dirt, oil, and mud.
Other ISONEM products recommended	ISONEM M 03 elastic repair mortar should be used for repairing cracks and gaps.
Other ISONEM products recommended	It should be applied between 5 - 35 °C.




General Features




Provides %100 Waterproofing



A2 S1 d0 Fire Class



Thermal Insulation



Fast Drying

	CONCRETE	MARBLE, GRANITE	RAW WOOD	TILE, CERAMICS	MEMBRANE, SHINGLE	STEEL, METAL
Application	Vertical/Horizontal	X	X	X	X	X
Surface Humidity	Humid Surface	X	X	X	X	X
Application Tools	Trowel	X	X	X	X	X
Primer Usage	X	X	X	X	X	X
Primer Consumption	X	X	X	X	X	X
Product Usage	2 Layers	X	X	X	X	X
Product Consumption	20 kg / m ²	X	X	X	X	X
Between Two Coats	24 Hours	X	X	X	X	X
Touch-free Drying	24 Hours	X	X	X	X	X
Through Drying	14 Days	X	X	X	X	X

Note : Drying times are approximate data, it may vary depending on ambient conditions.

